

Applications

- ◆ Cell Phone Handsets and Accessories
- ◆ Microprocessor based equipment
- ◆ Personal Digital Assistants (PDA's)
- ◆ Notebooks, Desktops, and Servers
- ◆ Portable Instrumentation
- ◆ Peripherals
- ◆ Pagers

IEC Compatibility

- ◆ IEC61000-4-2 (ESD) $\pm 15\text{kV}$ (air), $\pm 8\text{kV}$ (contact)
- ◆ IEC61000-4-4 (EFT) 40A (5/50ns)

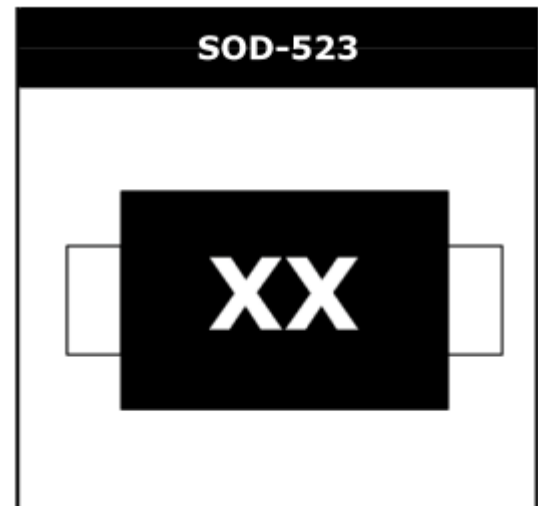
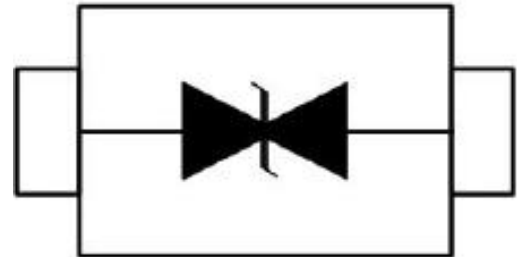
Features

- ◆ 100 Watts Peak Pulse Power per Line ($t_p=8/20\mu\text{s}$)
- ◆ Protects one bidirectional I/O line
- ◆ Low clamping voltage
- ◆ Working voltages : 3.3V, 5V and 8V
- ◆ Low leakage current

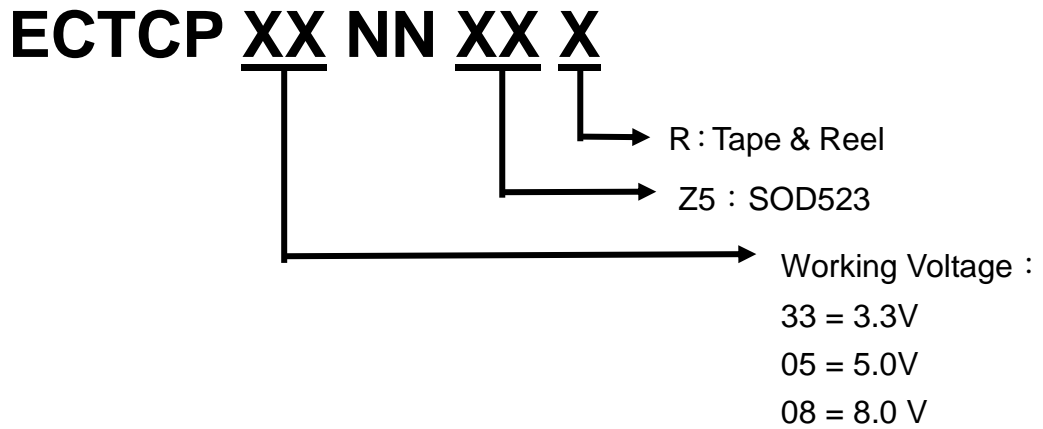
Mechanical Characteristics

- ◆ SOD-523 Package
- ◆ Molding Compound Flammability Rating : UL 94V-O
- ◆ Weight 2.0 Milligrams (Approximate)
- ◆ Quantity Per Reel : 3,000pcs
- ◆ Reel Size : 7 inch
- ◆ Lead Finish : Lead Free

Pin Configuration



Ordering Information

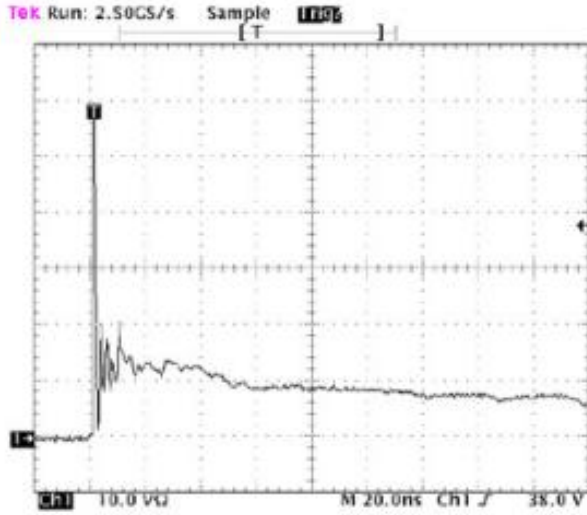


Device Characteristics

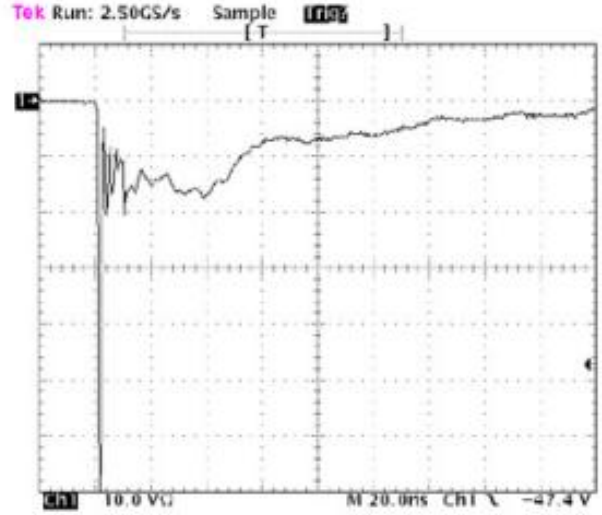
MAXIMUM RATINGS (@ 25°C Unless Otherwise Specified)			
PARAMETER	SYMBOL	VALUE	UNITS
Peak Pulse Power (tp=8/20µs waveform)	P _{PP}	100	Watts
Lead Soldering Temperature	T _L	260 (10 sec.)	°C
Operating Temperature Range	T _J	-55 ~ 150	°C
Storage Temperature Range	T _{STG}	-55 ~ 150	°C

ELECTRICAL CHARACTERISTICS PER LINE (@ 25°C Unless Otherwise Specified)									
PART NUMBER	DEVICE MARKING	V _{RWM} (V) (max.)	V _B (V) (min.)	I _T (mA)	V _C @1A (max.)	V _C (max.) (@A)		I _R (µA) (max.)	C _T (pF) (typ.)
ECTCP33NNZ5R	CT	3.3	3.5	1	7	12	8	1	10
ECTCP05NNZ5R	DT	5	6	1	9.8	20	5	1	10
ECTCP08NNZ5R	GT	8	8.5	1	17.5	25	3	1	7

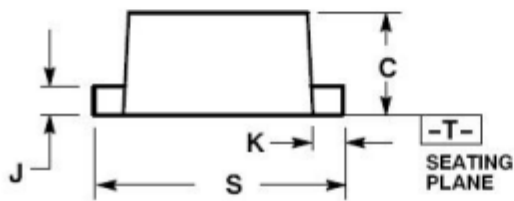
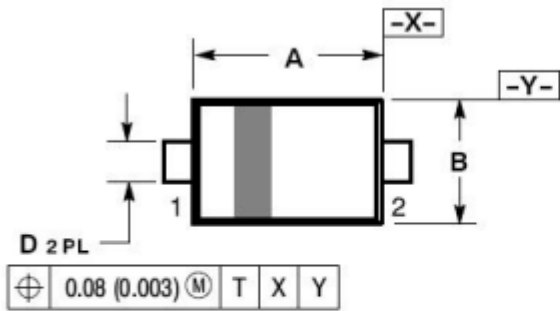
ESD Clamping Voltage screenshot
(8kV Contact Per IEC 61000-4-2)



ESD Clamping Voltage screenshot
(-8kV Contact Per IEC 61000-4-2)



SOD-523 Package Outline & Dimensions



DIM	MILLIMETERS			INCHES		
	MIN	NOM	MAX	MIN	NOM	MAX
A	1.10	1.20	1.30	0.043	0.047	0.051
B	0.70	0.80	0.90	0.028	0.032	0.035
C	0.50	0.60	0.70	0.020	0.024	0.028
D	0.25	0.30	0.35	0.010	0.012	0.014
J	0.07	0.14	0.20	0.0028	0.0055	0.0079
K	0.15	0.20	0.25	0.006	0.008	0.010
S	1.50	1.60	1.70	0.059	0.063	0.067

*** SOLDERING FOOTPRINT**

